

|   |                                |
|---|--------------------------------|
| <b>WinFrog Device Group:</b>                          | <b>PROFILER</b>                |
| <b>Device Name/Model:</b>                             | <b>SIMPROFILER</b>             |
| <b>Device Manufacturer:</b>                           |                                |
| <b>Device Data String(s)<br/>Output to WinFrog:</b>   | NONE                           |
| <b>WinFrog Data String(s)<br/>Output to Device:</b>   | NONE                           |
| <b>WinFrog Data Item(s) and their<br/>RAW record:</b> | PROFILE          1916 and 1917 |

**DEVICE DESCRIPTION:**

The SIM PROFILER device is designed to simulate data gathered by profiling devices such as the Simrad – Mesotech or Imagenex systems. In WinFrog, the profiling devices are designed for data collection for subsequent processing, therefore, raw data is collected in the type 1916 and 1917 data records for post processing and creation of maps or charts.

This device is typically used for simulation and training purposes. In order to create a more realistic simulation you may also wish to add several other simulated devices including SimGPS, SimGyro and SimUSBL.

***DEVICE CONFIGURATION INSTRUCTIONS***

---

**WINFROG I/O DEVICES > EDIT I/O:**

Simulated Device

**WINFROG I/O DEVICES > CONFIGURE DEVICE:**

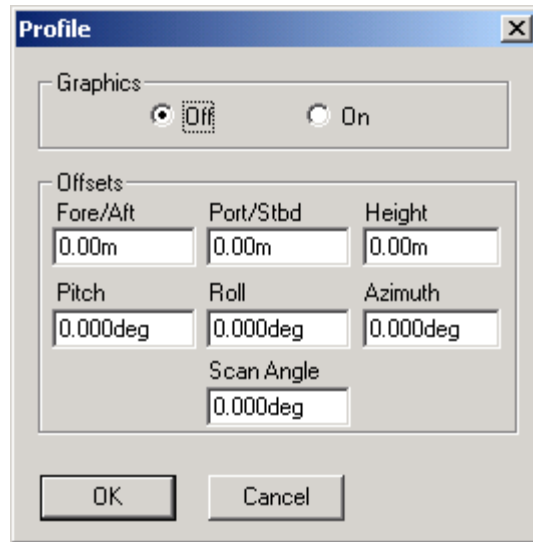
No configuration is required at the I/O Device window level.

**WINFROG VEHICLE > CONFIGURE VEHICLE DEVICES > DEVICE DATA ITEM > EDIT:**

Adding the SimProfiler device creates the PROFILE data item. Once the data item has been added to the vehicle, it must be edited to suit the application.

**Data item: PROFILER, SimProfiler, PROFILE**

Highlight this data item in the vehicles device list and click the Edit button to open the Profile dialog box as seen below.



The X,Y,Z Offsets are applied from CRP to the Profiler Head Location. These values are set similar to values that would be applied to any device offset within WinFrog.

Other items under the Offsets section of the dialog are as follows:

**Pitch:** Enter in the simulated inclination of the fore/aft axis mounting error of the Scanning Head. Positive pitch is applied when the transducer end of the head is tilted up, or back in the case of a vertically mounted head.

**Roll:** Enter in the simulated inclination of the port/starboard axis mounting error of the Scanning Head. Positive roll is applied when the left side of the head is tilted up, or back in the case of a vertically mounted head.

**Azimuth:** Enter in the simulated scan angle relative to the bow of the vessel. A positive azimuth is clockwise, with 0° referenced to the bow of the vessel.

**Scan Angle:** This is the sector angle of coverage centered on the perpendicular to the profiling head transducer usually referred to as the swath. However, this option will not apply an offset in the SimProfiler device.